

FRONT ELEVATION- A VERSION

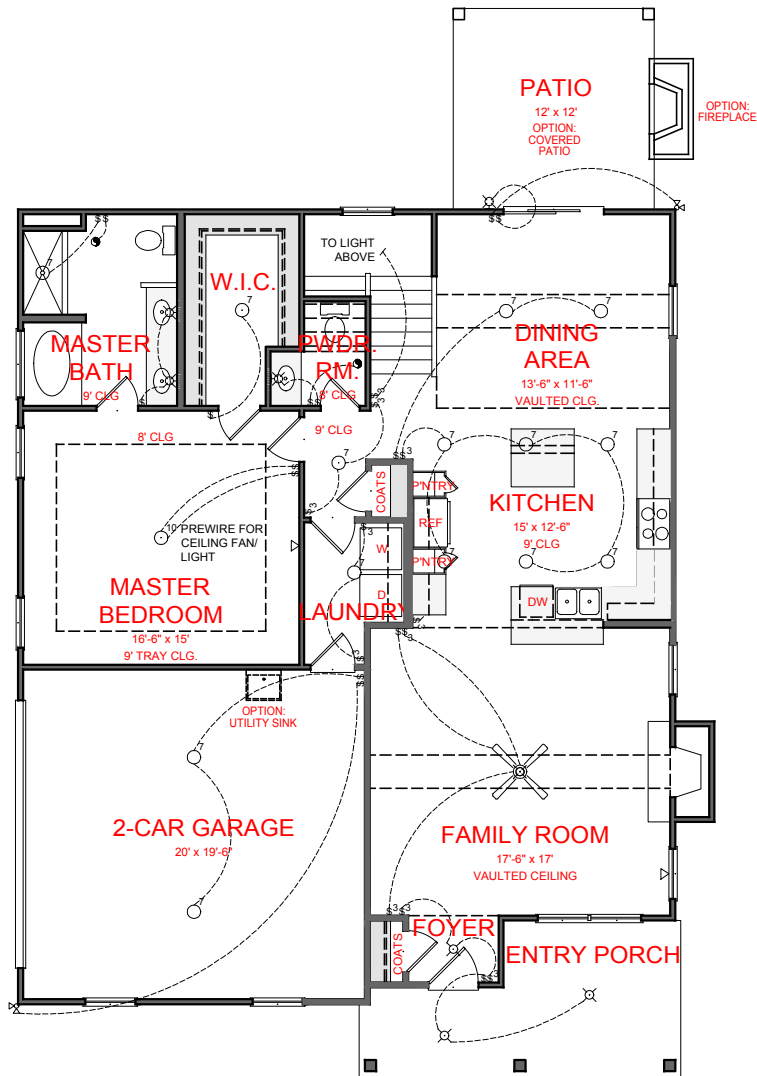
HARRISBURG
 PINEY WOODS VERSION



SQUARE FOOTAGE:

FIRST FLOOR:	1,387
SECOND FLOOR:	536
TOTAL:	1,923

THE DRAWING(S) ON THIS PAGE ARE A GRAPHICAL REPRESENTATION ONLY. PLEASE CONSULT YOUR AGENT FOR SPECIFIC INFORMATION REGARDING THIS FLOOR PLAN. THE DESIGN OF THE FLOOR PLAN REPRESENTED IS SUBJECT TO CHANGE WITHOUT NOTICE.



FIRST FLOOR PLAN

HARRISBURG

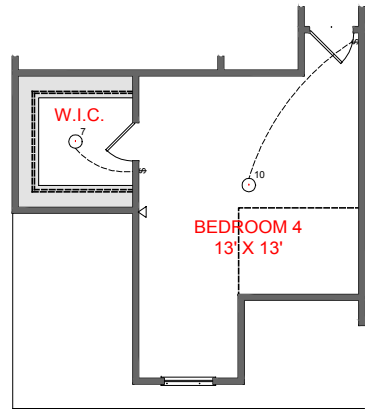
PINEY WOODS VERSION



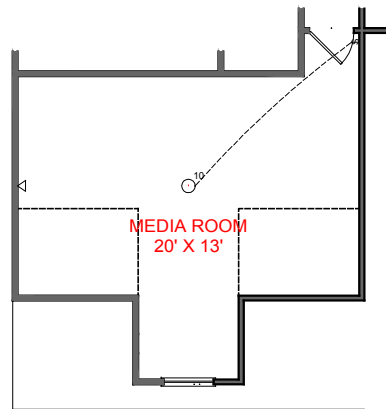
SQUARE FOOTAGE:

FIRST FLOOR:	1,387
SECOND FLOOR:	536
TOTAL:	1,923

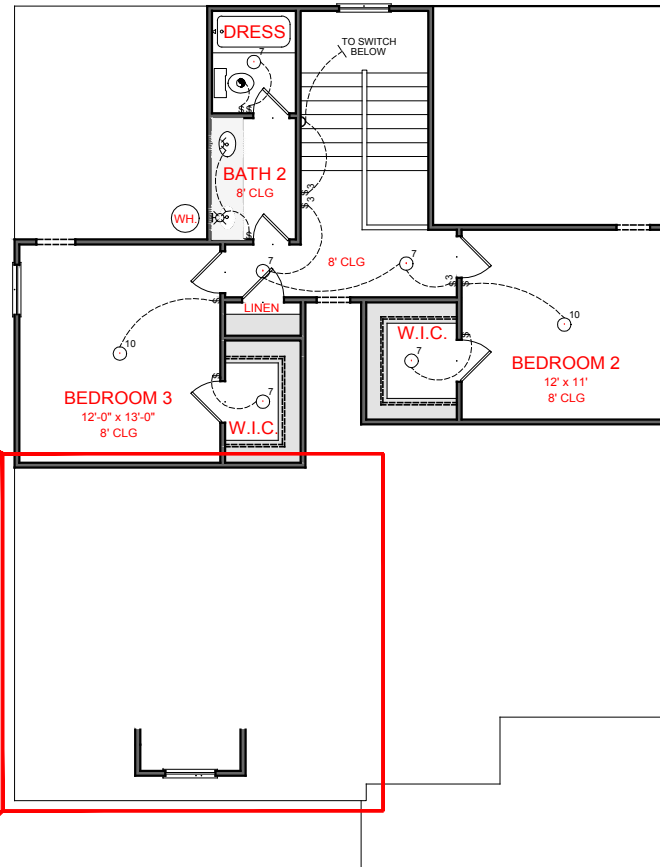
*THE DRAWING(S) ON THIS PAGE ARE A GRAPHICAL REPRESENTATION ONLY. PLEASE CONSULT YOUR AGENT FOR SPECIFIC INFORMATION REGARDING THIS FLOOR PLAN. THE DESIGN OF THE FLOOR PLAN REPRESENTED IS SUBJECT TO CHANGE WITHOUT NOTICE.



OPTION: 4TH BEDROOM
ADD 286 SQ. FT.



OPTION: MEDIA ROOM
ADD 324 SQ. FT.



SECOND FLOOR PLAN

HARRISBURG

PINEY WOODS VERSION



SQUARE FOOTAGE:

FIRST FLOOR:	1,387
SECOND FLOOR:	536
TOTAL:	1,923

*THE DRAWING(S) ON THIS PAGE ARE A GRAPHICAL REPRESENTATION ONLY. PLEASE CONSULT YOUR AGENT FOR SPECIFIC INFORMATION REGARDING THIS FLOOR PLAN. THE DESIGN OF THE FLOOR PLAN REPRESENTED IS SUBJECT TO CHANGE WITHOUT NOTICE.